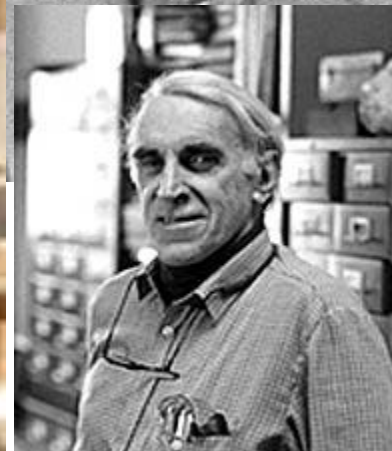
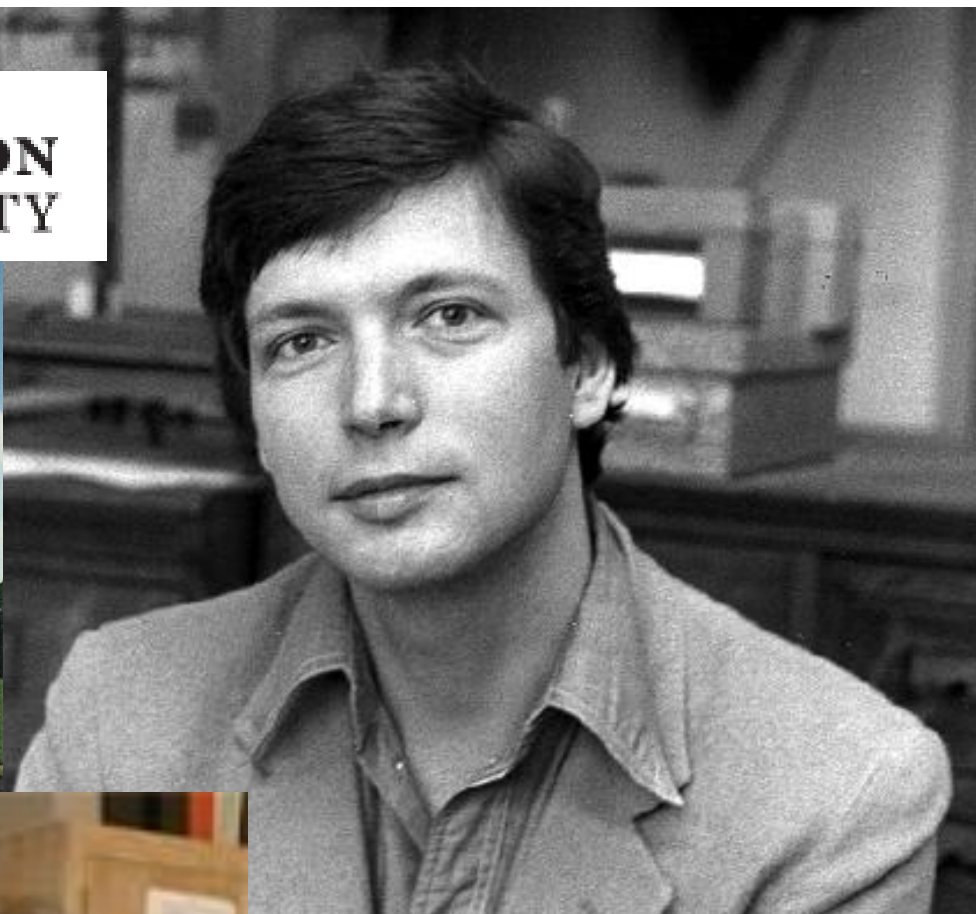


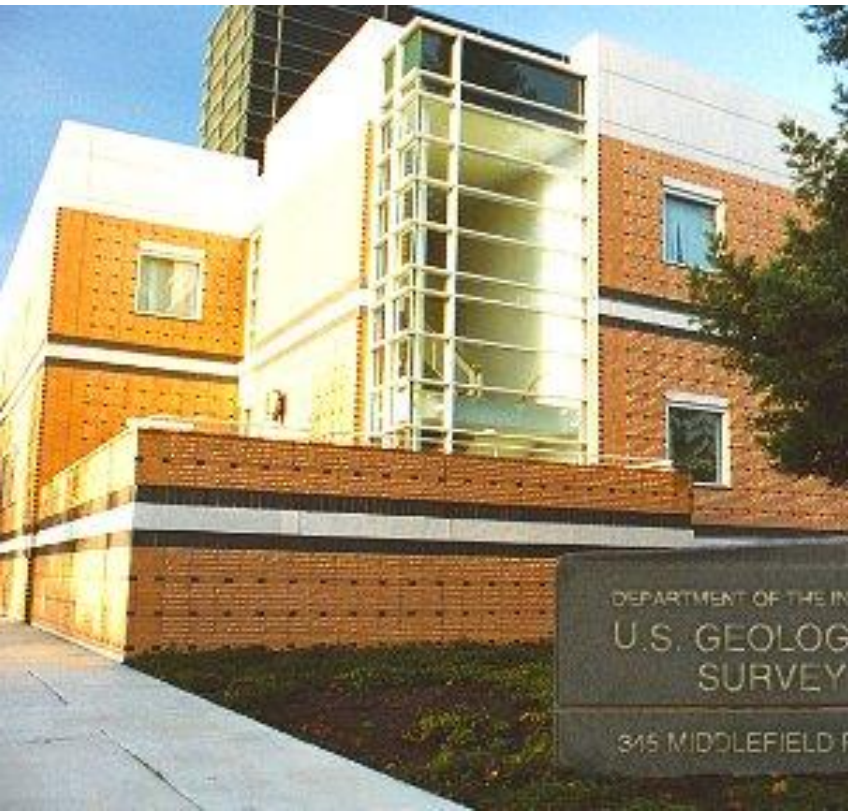


ARTHUR L. DAY MEDAL LECTURE:
Back to the future as a geochemist

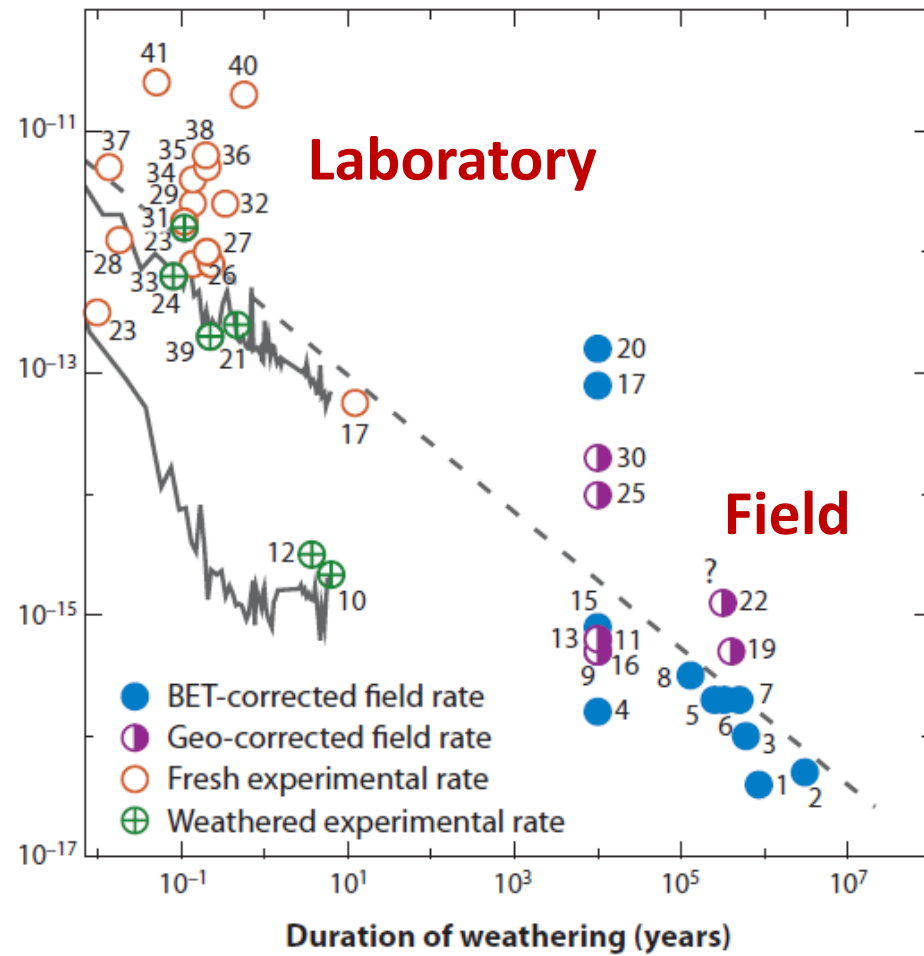


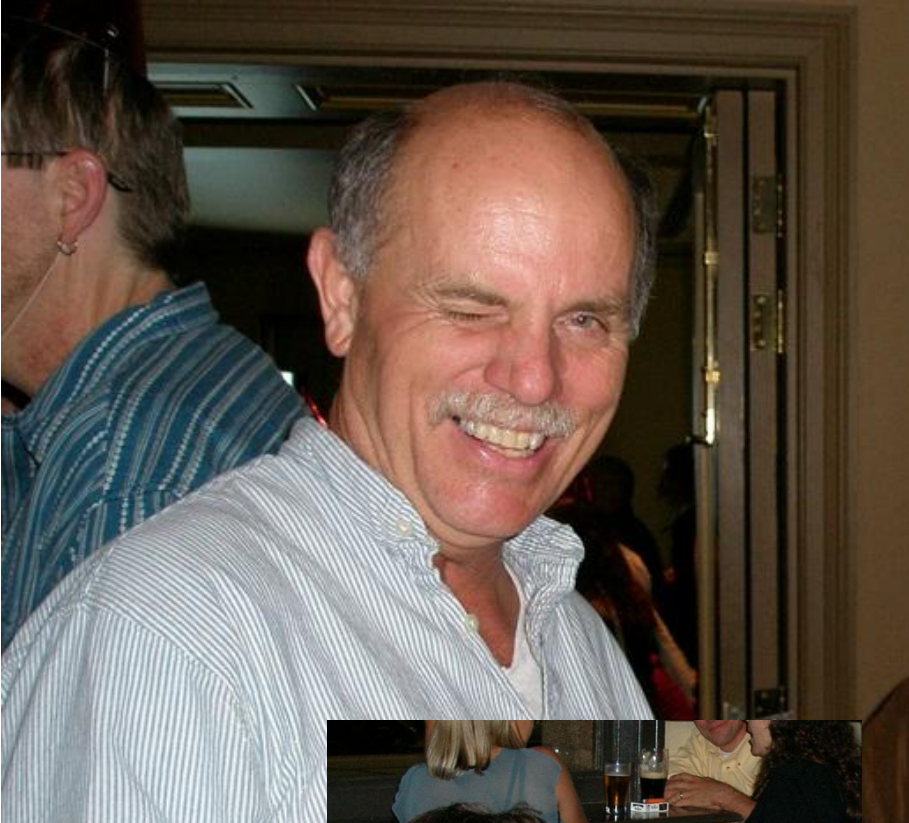
PRINCETON
UNIVERSITY

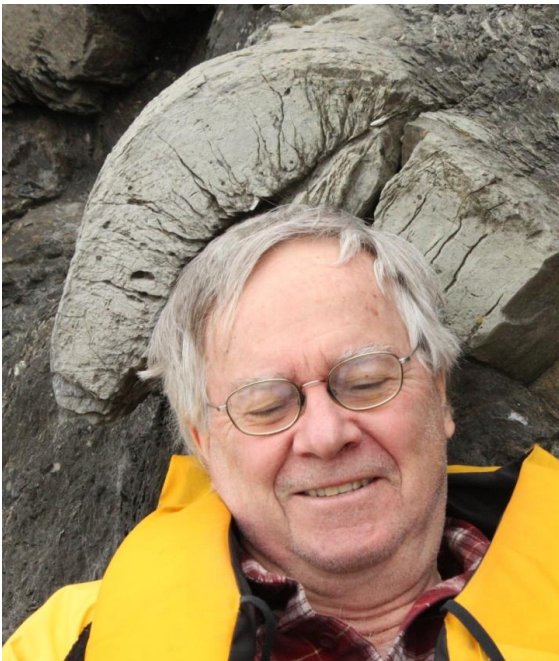




Weathering rates



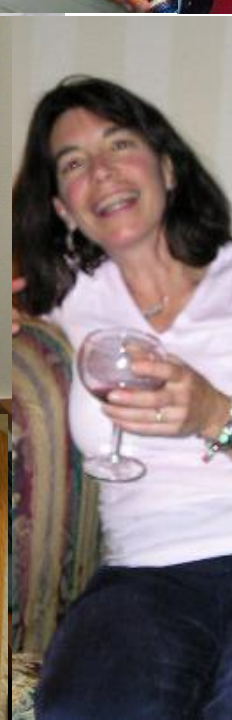
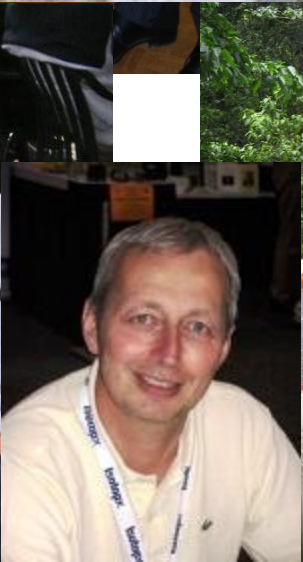




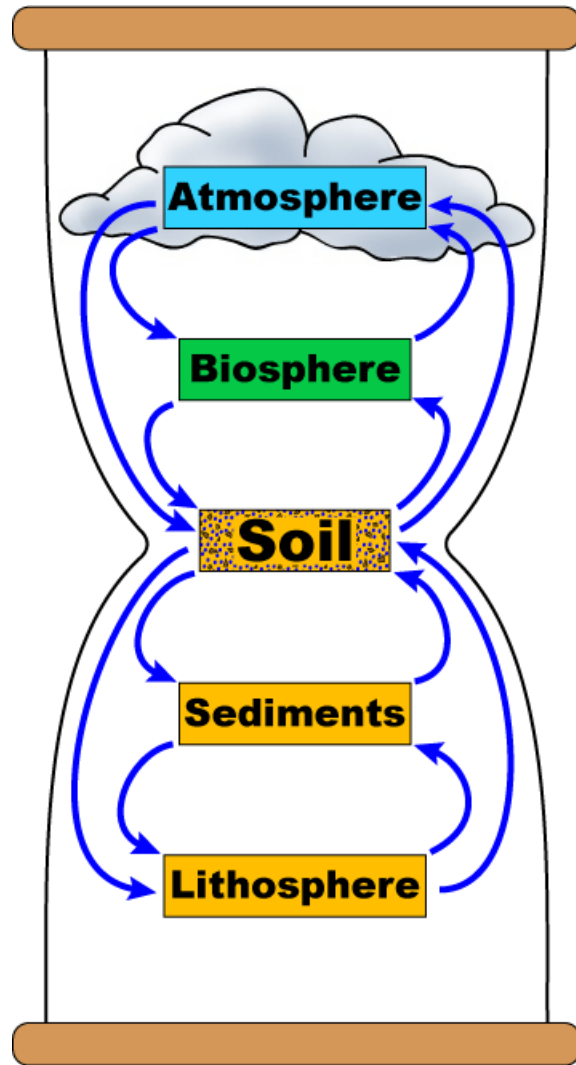
TESI **Brantley Group - 2009**

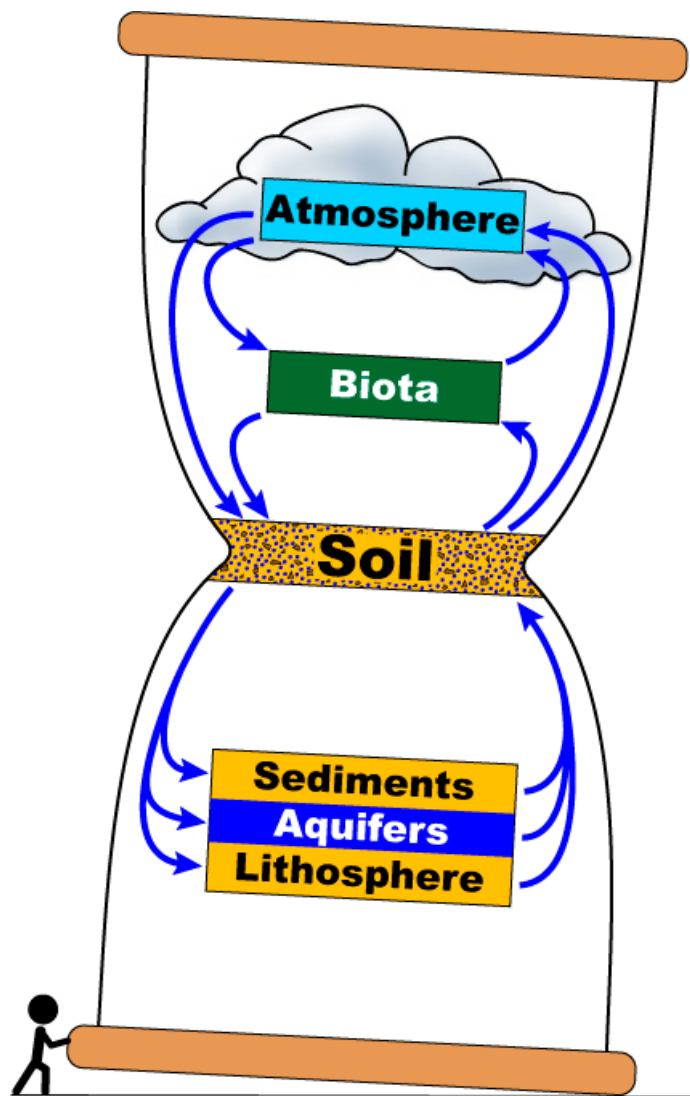
PSU





SCOTT A. WOOD
Dean







ATTENTION

The area beyond this gate is left in its natural state. You may encounter cliffs, avalanche debris, fallen trees, rock outcrops, possible avalanche hazard, or other hazards at or below the snow surface.

CAUTION IS ADVISED.