



# FLOOR PLANS AND CAPACITIES

1750 Welton Street, Denver, Colorado 80202

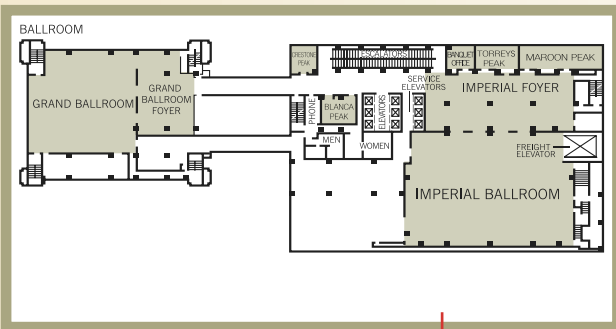
TELEPHONE 303 295 1234 GUEST FACSIMILE 303 295 2472 SALES FACSIMILE 303 295 5718

granddenver.hyatt.com

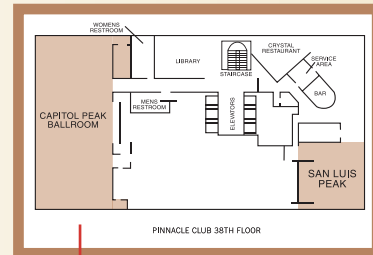
## GRAND HYATT DENVER

## ATRIUM TOWER

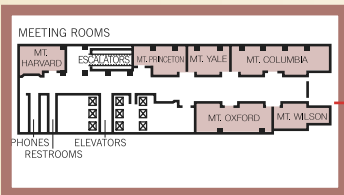
SECOND FLOOR



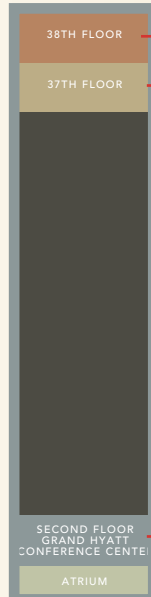
38TH FLOOR – PINNACLE CLUB



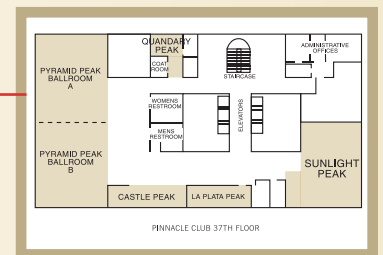
THIRD FLOOR



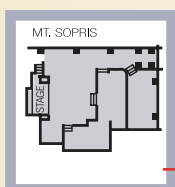
ATRIUM TOWER



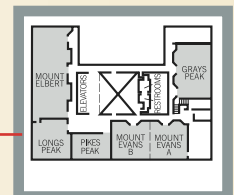
37TH FLOOR – PINNACLE CLUB



LOBBY LEVEL MT. SOPRIS



SECOND FLOOR – GRAND HYATT CONFERENCE CENTER



PORTE COCHERE

## GRAND HYATT DENVER

GRAND HYATT	Room Dimensions L x W x H	Area Sq. Ft.	Banquet	Reception	Theater	Classroom	Boardroom	U-Shape
<b>LOBBY LEVEL</b>								
Mt. Sopris	63' x 63' x 20'	3970	250	430	300	175	—	—
<b>SECOND FLOOR</b>								
Imperial Ballroom	112'5" x 80'2" x 18'	8848	700	1400	1000	550	—	80
Imperial Ballroom Foyer	101' x 41'8" x 14'	4120	—	650	—	—	—	—
Grand Ballroom	80'2" x 72'9" x 18'	6885	400	800	700	400	—	80
Grand Ballroom Foyer	61' x 39' x 13'	2231	—	400	—	—	—	—
Blanca Peak	24'6" x 12'3" x 15'	406	20	30	30	15	16	—
Crestone Peak	21'7" x 16'5" x 15'	373	30	35	30	24	15	15
Torreys Peak	26'8" x 17'9" x 14'	554	—	—	—	—	16	18
Maroon Peak	57' x 15'11" x 14'	1089	80	120	120	59	42	40
<b>THIRD FLOOR</b>								
Mt. Harvard	30' x 17'3" x 14'	589	40	60	60	30	24	22
Mt. Princeton	35'7" x 14'4" x 14'	618	40	70	65	36	25	25
Mt. Yale	28' x 17' x 14'	553	40	45	40	30	20	16
Mt. Columbia	65' x 16'5" x 14'	1269	100	135	120	66	48	44
Mt. Oxford	50'6" x 15'2" x 14'	993	70	100	90	54	36	28
Mt. Wilson	36'2" x 14'6" x 10'	638	40	60	50	30	25	25

Audio/visual, sound, high-speed Internet and telephone capabilities are also available. (Some fees do apply.)

## ATRIUM TOWER

ATRIUM TOWER	Room Dimensions L x W x H	Area Sq. Ft.	Banquet	Reception	Theater	Classroom	Conference	U-Shape
<b>GRAND HYATT CONFERENCE CENTER</b>								
Grays Peak	28' x 50' x 11'	1400	120	200	130	90	50	46
Mt. Evans	30' x 70' x 11'	2100	130	275	200	135	64	60
Mt. Evans A	35' x 30' x 11'	1050	60	135	90	50	30	30
Mt. Evans B	35' x 30' x 11'	1050	60	135	90	50	30	30
Pikes Peak	35' x 20' x 11'	700	50	100	60	30	24	20
Longs Peak	33' x 31' x 11'	1023	60	135	90	50	30	32
Mt. Elbert	29' x 82' x 11'	2378	160	340	220	160	72	76
<b>37th FLOOR - PINNACLE CLUB</b>								
Pyramid Peak Ballroom	121' x 30' x 10'	3630	300	450	400	246	—	80
Pyramid Peak A	60'6" x 30' x 10'	1815	150	225	200	120	46	46
Pyramid Peak B	60'6" x 30' x 10'	1815	150	225	200	120	46	46
Sunlight Peak	66' x 30'6" x 10'	1990	160	250	175	100	60	56
Castle Peak	45'6" x 15'6" x 10'	682	50	75	60	42	30	30
La Plata Peak	29'6" x 15'6" x 9'11"	450	32	60	45	24	15	15
Quandary Peak	19'6" x 15'6" x 9'11"	302	24	40	25	18	10	10
<b>38th FLOOR - PINNACLE CLUB</b>								
Capitol Peak Ballroom	120' x 31'6" x 15'	3857	310	450	422	260	—	80
San Luis Peak	53'6" x 29' x 12'	1537	120	150	130	75	40	40