



Washington State Convention & Trade Center

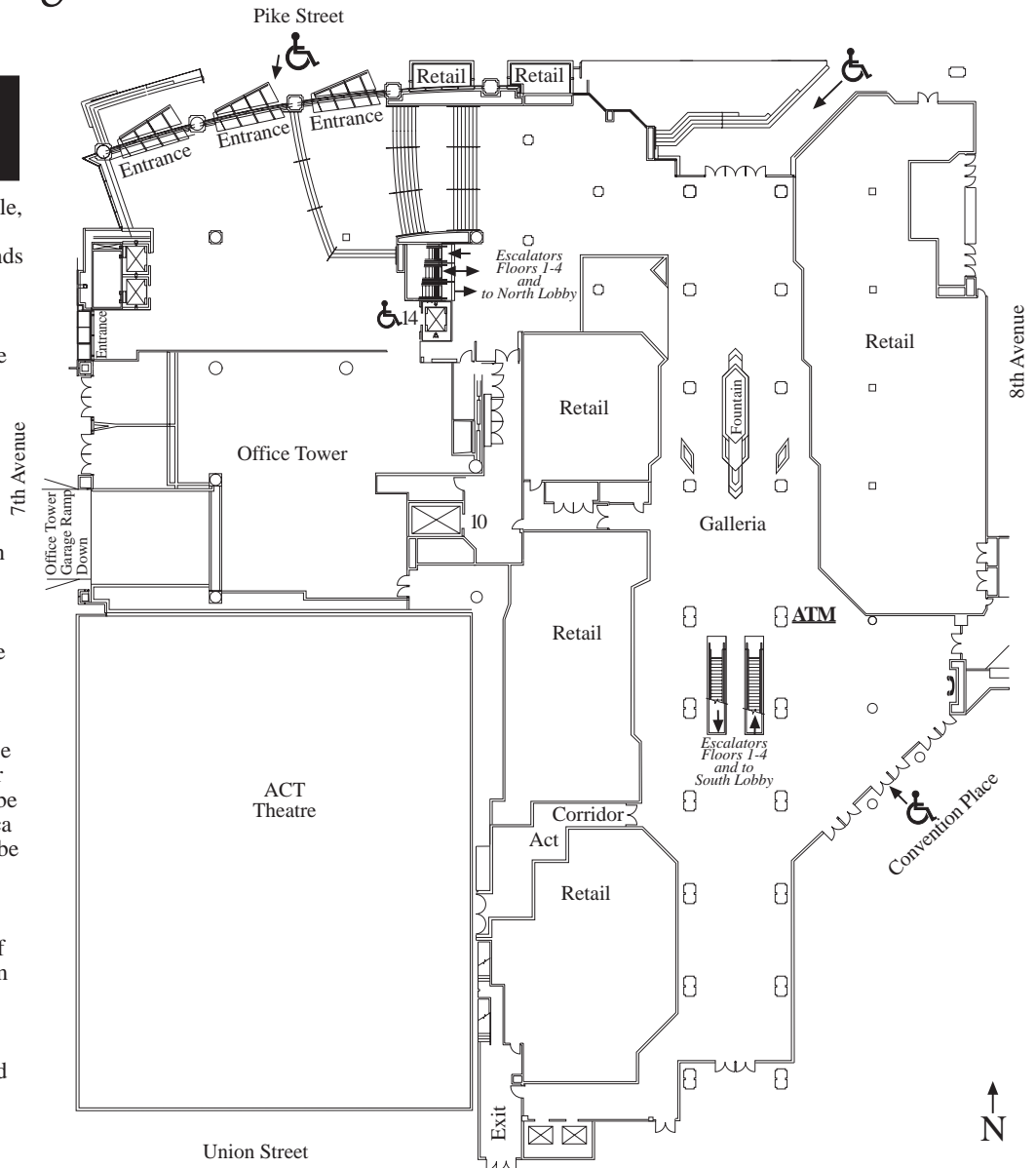
Level 1

Located in the heart of downtown Seattle, the Washington State Convention & Trade Center hosts hundreds of thousands of visitors annually. The center is convenient to many of Seattle's most luxurious hotels; to symphony halls, theaters and museums; and to one of the country's best shopping experiences whether visitors choose the large retail outlets in the city's core or the unique and exciting boutiques and shops in the Pike/Pine corridor. All are within walking distance.

The Convention Center also has its own Galleria of shops located on the first level. Printer and sign maker; coffee house and tourist information center, beauty salon and health club...all for the convenience of tourists, delegates and visitors from adjacent neighborhoods.

A two-level, 1,581-space parking garage is located within the Convention Center facility. Operated by the Center it can be accessed on 8th Avenue between Seneca and Pike Streets. Passengers may also be dropped off at the covered Convention Place entrance off Pike Street and 9th Avenue. Buses, taxi cabs and shuttles also use this area for passenger drop-off and pick-up. Pedestrians can enter from Pike or Union Streets.

For more information or to book your meeting, please call (206) 694-5030 and ask for our sales office.



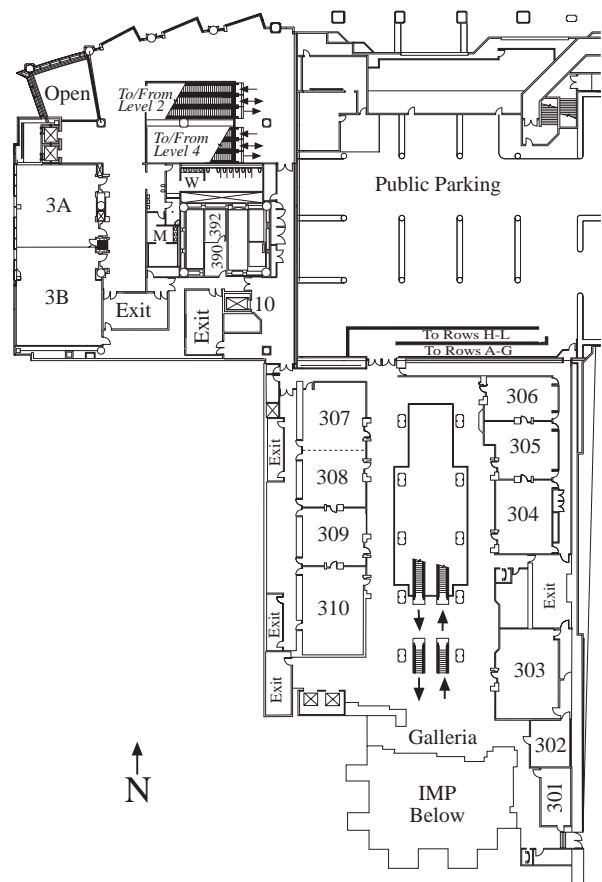
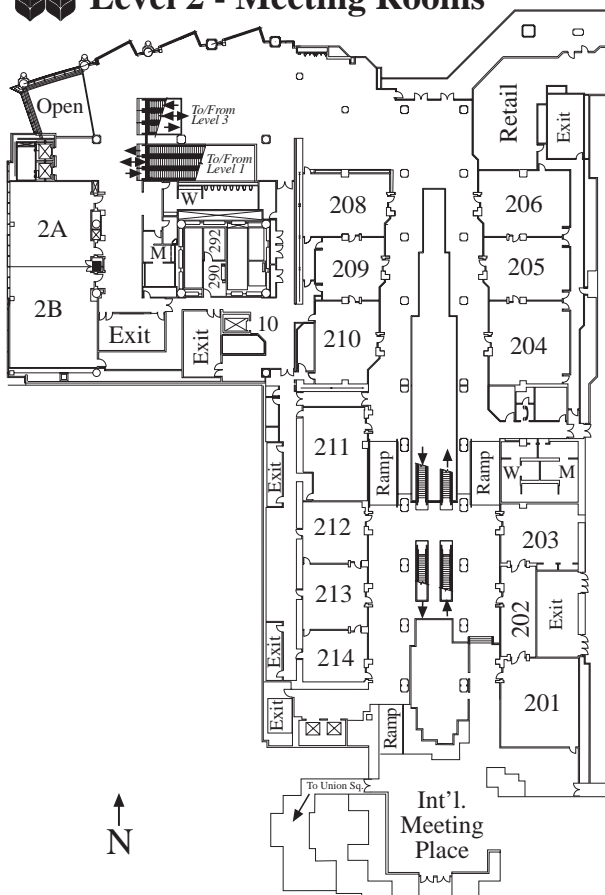
Room Capacity List

1. Set Identification; Schoolroom = 18" wide tables at 2' per person per 8' table ("4pp") or 2.5' per person ("3pp"); Theater = Theater style seating, chairs may be linked based on amount set; B-10 = 72" round table for 10 people; CNF = Seating for all people at a square or rectangular table set. All sets are with 21" wide chairs.
2. All published capacities will vary according to peripheral room set requirements. Large head tables, audio/visual equipment, and risers and/or materials and catering tables may substantially reduce these capacities. Depending on the peripheral requirements, perimeter seating may be allowed.
3. Capacities listed in *italic* and underlined, i.e. 220, indicate a center aisle is included. Ballroom and Exhibit Hall set include one or more aisles. Other numbers reflect room sets without center aisles.
4. Ballroom, Theater and Schoolroom sets include an average of 22' at the front.
5. Banquet (B-10) capacities are based on maximum seating in rooms. Provisions for head tables, dance floor or audio/visual will reduce capacity. All B-10 sets use 72" diameter round tables on 11' centers. Standard sets are straight rows though some sets are staggered when necessary to maximize capacity.
6. Banquet (B-8) capacities are based on maximum seating in rooms. Provisions for head tables, dance floor or audio/visual will reduce capacity. All B-8 sets use 60" diameter round tables on 11' centers. Standard sets are straight rows though some sets are staggered when necessary to maximize capacity.
7. Rooms 601-614 Theatre and Schoolroom sets include front of room space (12' deep) adequate for a riser at the front.
8. Rooms 615-620 Theater and Schoolroom sets include front of room space (average 9' to 10' deep) adequate for a riser at the front.
9. Rooms 201-206, 208-214, 2A, 2B, 301-310, 3A, 3B, 400, 401, 4C-1, 4C-2, 4C-3, 4C-4 Theater and Schoolroom sets include front of room space (averaging 9' to 10' deep). Risers will not be set in these rooms.
10. Rooms 208, 209, 210 and 301 are executive conference rooms with higher quality finishes, fixed furnishings and equipment. Contact WSCTC Sales for more details.

Level 2 & 3 - Meeting Rooms

LOCATION	DIMENSIONS				CAPACITIES						
	Description	Square Feet	Length	Width	Height (Feet)	Theater	Schoolroom 3pp	Schoolroom 4pp	Banquet B-8	Conference Style	Room ID
MEETING ROOMS-Level 2											
Meeting Room 201	1,435	35	41	8'5"	128	54	72	64	40	201	
Meeting Room 202	602	43	14	9'	35	18	24	16	18	202	
Meeting Room 203	1,008	36	28	8'11"	75	36	49	48	32	203	
Meeting Room 204	1,406	38	37	8'11"	126	55	75	56	40	204	
Meeting Room 205	1,073	37	29	8'11"	91	40	54	48	32	205	
Meeting Room 206	1,200	40	30	8'11"	97	42	56	48	32	206	
Meeting Room 208	1,160	40	29	8'11"	-	24	-	-	24	208	
Meeting Room 209	928	32	29	8'10"	-	-	-	-	14	209	
Meeting Room 210	950	38	25	8'11"	70	-	-	-	-	210	
Meeting Room 211	1,247	43	30	8'11"	104	42	56	64	32	211	
Meeting Room 212	783	29	27	8'11"	70	33	45	32	24	212	
Meeting Room 213	810	30	27	8'11"	75	32	44	32	24	213	
Meeting Room 214	734	29	26	8'11"	70	28	40	32	24	214	
Meeting Room 2A	1,520	40	38	12'11"	144	60	84	72	40	2A	
Meeting Room 2B	1,786	47	38	12'11"	180	80	112	96	56	2B	
Meeting Rooms 2A & 2B	3,306	87	38	12'11"	360	160	224	192	88	2AB	

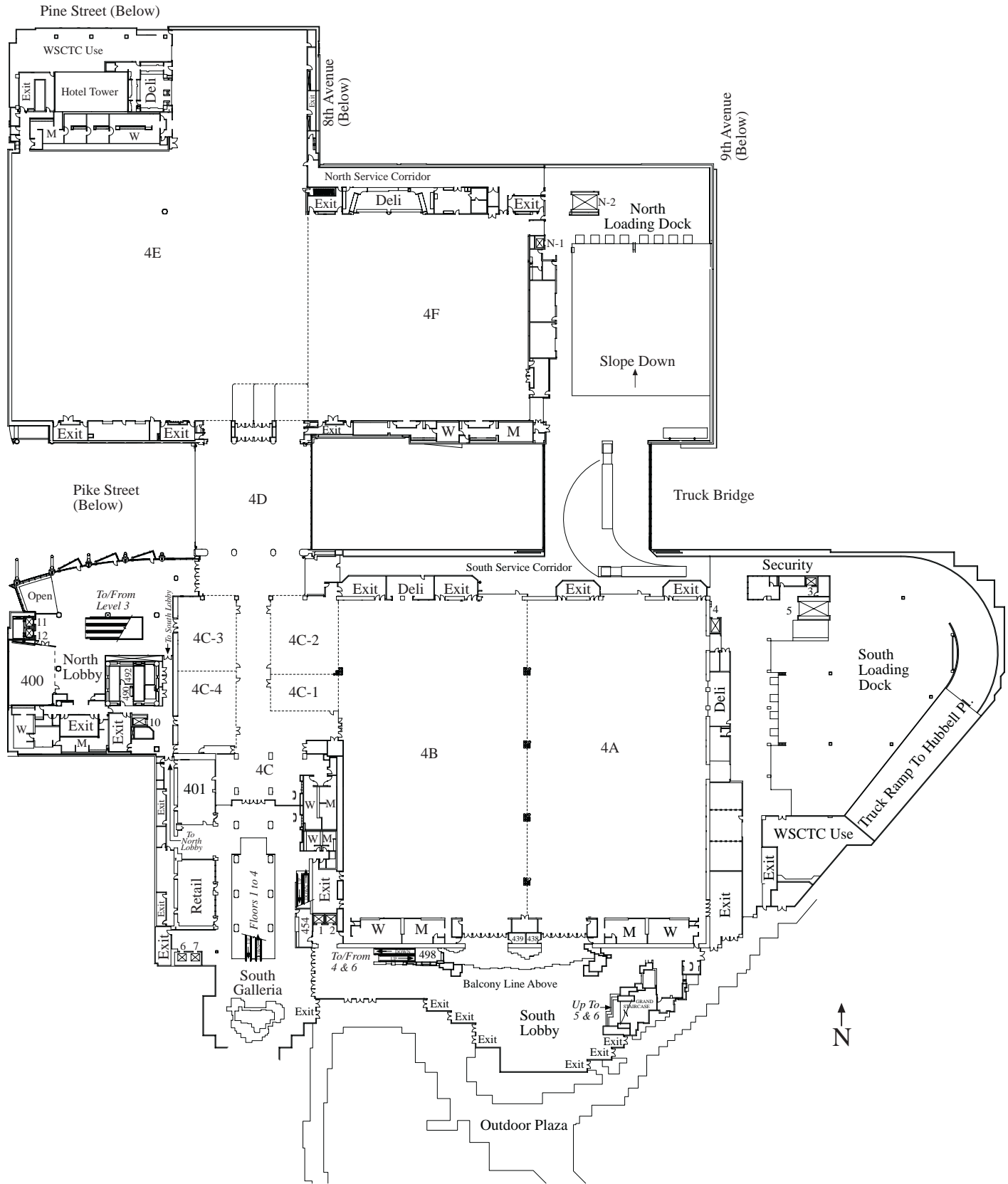
Level 2 - Meeting Rooms



Level 3 - Meeting Rooms

Description	Square Feet	Length	Width	Height (Feet)	Theater	Schoolroom		Banquet B-8	Conference Style	Room ID
						3pp	4pp			
MEETING ROOMS-Level 3										
Meeting Room 301	406	29	14	8'3"	-	-	-	-	12	301
<i>(Permanent Board Room Set)</i>										
Meeting Room 302	460	23	20	8'3"	32	12	18	16	18	302
Meeting Room 303	1,305	45	29	8'11"	116	62	85	64	40	303
Meeting Room 304	884	34	26	8'11"	75	30	40	48	32	304
Meeting Room 305	700	25	28	8'11"	55	24	32	32	24	305
Meeting Room 306	620	31	20	8'11"	56	25	35	32	24	306
Meeting Room 307	840	30	28	8'11"	78	40	55	48	24	307
Meeting Room 308	756	28	27	8'11"	70	36	44	32	24	308
Meeting Rooms 307 & 308 Combined	1,630	60	29	8'11"	169	80	110	96	48	307-308
Meeting Room 309	783	29	27	8'11"	60	24	32	32	24	309
Meeting Room 310	1,160	29	40	8'11"	104	44	60	48	32	310
Meeting Room 3A	1,520	40	38	12'11"	144	60	84	72	40	3A
Meeting Room 3B	1,786	47	38	12'11"	180	80	112	96	56	3B
Meeting Rooms 3A & 3B	3,306	87	38	12'11"	360	160	224	192	88	3AB

Level 4 - Exhibition Halls



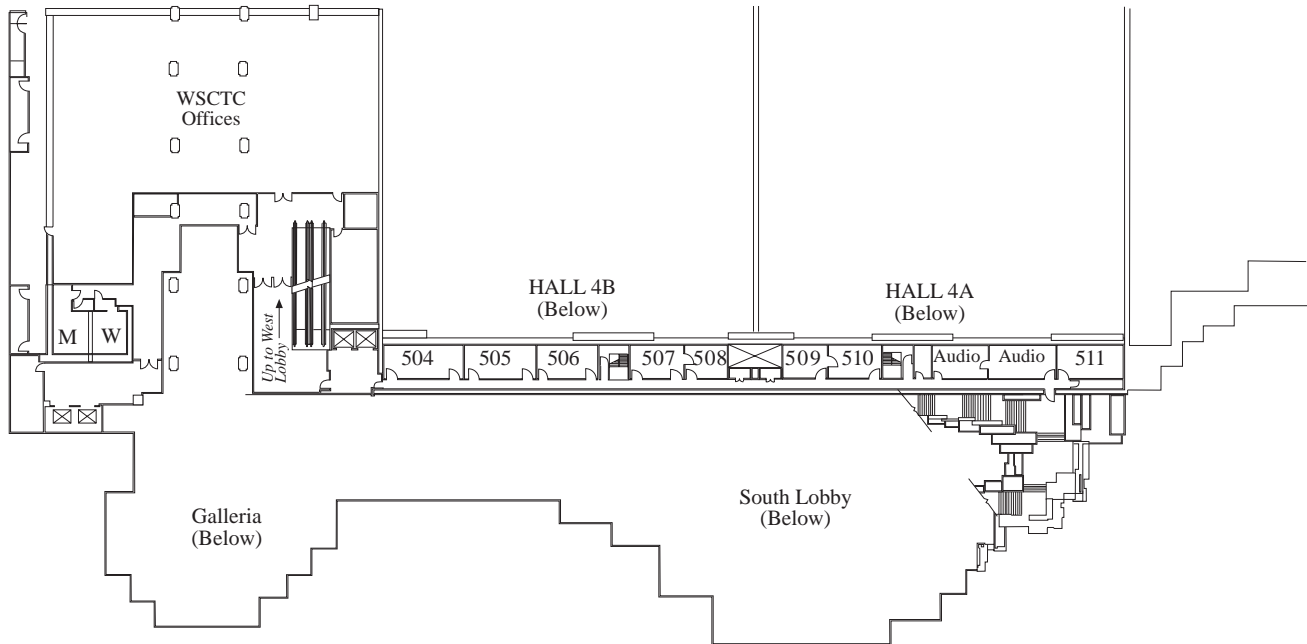
Level 4 - Exhibition Halls

LOCATION	DIMENSIONS					CAPACITIES						
	Description	Square Feet	Square Meter	Length	Width	Height (Feet)	Theater	Schoolroom 3pp	Schoolroom 4pp	Banquet B-10	Booth 10'x10'	Room ID
EXHIBIT HALLS-Level 4												
Exhibit Hall 4A	40,000	3,716	260	143	25	4,032	2,226	2,968	2,310	186	4A	
Exhibit Hall 4B	40,000	3,716	260	149	25	4,032	2,226	2,968	2,310	204	4B	
Exhibit Hall 4C ¹	20,000	1,858	131	125	24	1,740	783	1,044	1,030	75	4C ¹	
Exhibit Halls 4AB Combined	80,000	7,432	292	260	25	<u>7,000</u>	-	-	4,620	382	4AB	
Exhibit Halls 4BC Combined	60,000	5,574	-	-	25	-	-	-	-	278	4BC	
Exhibit Halls 4ABC Combined	100,000	9,290	-	-	25	-	-	-	-	456	4ABC	
Level 4 South Lobby	7,000	650	-	-	50	-	-	-	500	-	South	
Exhibit Hall 4D ^{1,2}	10,900	1,012	86	94	25	-	-	-	630	42	4D ^{1,2}	
Exhibit Hall 4E	64,200	5,964	242 x 220 + 100 x 110		25	5,568	2,634	3,512	2,710	329	4E	
Exhibit Hall 4F	30,600	2,842	180	170	25	3,168	1,488	1,984	1,440	143	4F	
Exhibit Halls 4EF Combined	94,800	8,806	-	-	25	8,722	4,396	5,862	4,150	487	4EF	
Exhibit Halls 4DEF Combined	105,700	9,819	-	-	25	-	-	-	-	529	4DEF	
Level 4 North Lobby	8,000	-	-	-	50	-	-	-	-	-	North	
Exhibit Halls 4ABCDEF Combined	205,700	19,109	-	-	25	-	-	-	-	985	4ABCDEF	
Exhibit Halls 4BCDEF Combined	165,700	15,393	-	-	25	-	-	-	-	807	4BCDEF	
Exhibit Halls 4CDEF Combined	125,700	11,677	-	-	25	-	-	-	-	608	4CDEF	
MEETING ROOMS-Level 4												
Description	Square Feet		Length	Width	Height (Feet)	Theater	Schoolroom 3pp	Schoolroom 4pp	Banquet B-10	Conference Style	Room ID	
Meeting Room 400	1,824	-	48	38	14	176	72	96	80	48	400	
Meeting Room 401	1,508	-	52	29	12	156	72	99	80	46	401	
Meeting Room 4C-1	1,650	-	30	55	14	156	72	99	80	48	4C-1	
Meeting Room 4C-2	3,520	-	64	55	14	364	165	220	200	64	4C-2	
Meeting Room 4C-3	2,928	-	61	48	14	286	120	160	180	64	4C-3	
Meeting Room 4C-4	2,928	-	61	48	14	286	120	160	170	72	4C-4	
Meeting Rooms 4C-1,2	5,170	-	94	55	14	567	255	340	280	96	4C-1,2	
Meeting Rooms 4C-3,4	6,144	-	128	48	14	660	276	368	300	128	4C-3,4	

¹ 4C and 4D dimensions Do Not include entry vestibule. Square feet/meters Do include vestibule.

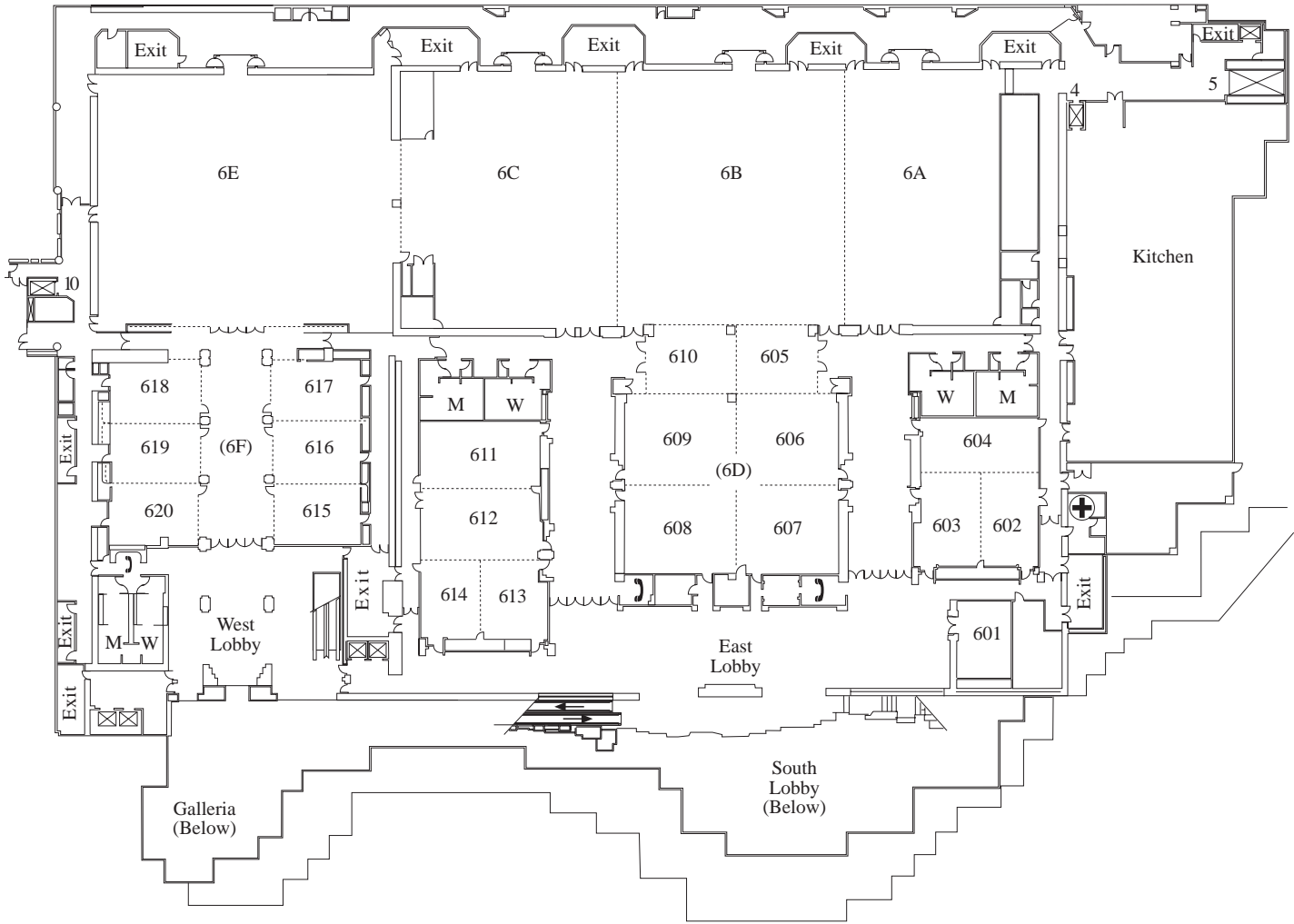
² 4D B-10 = 60" rounds with 10 banquet chairs.

Level 5 - Show Offices



Description	Square Feet	Length	Width	Height	Banquet B10	Conference Style	Room ID
Conference Room 504	351	27	13	9	20	16	504
Conference Room 505	364	28	13	9	20	16	505
Conference Room 506	364	28	13	9	20	16	506
Conference Room 507	208	16	13	9	10	8	507
Conference Room 508	260	20	13	9	10	8	508
Conference Room 509	260	20	13	9	10	8	509
Conference Room 510	208	16	13	9	10	8	510
Conference Room 511	325	25	13	9	20	16	511
Conference Rooms 504-505 Combined	715	55	13	9	40	-	504-505
Conference Rooms 504-506 Combined	1,079	83	13	9	60	-	504-506
Conference Rooms 505-506 Combined	728	56	13	9	40	-	505-506

Level 6 - Ballrooms & Meeting Rooms



Level 6 - Ballrooms

LOCATION Description	DIMENSIONS					CAPACITIES						Room ID
	Square Feet	Square Meter	Length	Width	Height (Feet)	Theater	Schoolroom 3pp	Schoolroom 4pp	Banquet B-10	Booth 8'x10'	Booth 10'x10'	
BALLROOMS-Level 6												
Ballroom 6A	8,352	776	116	72	21	850	342	456	540	54	36	6A
Ballroom 6B	11,500	1,077	115	100	21	1,150	570	760	770	73	55	6B
Ballroom 6C	9,512	883	116	82	21	1,000	456	608	660	56	51	6C
Meeting Rooms 605-610 Combined	10,050	933	110	96	16	1,025	477	596	560	65	52	6D
Ballroom 6E	15,048	1,398	132	114	21	1,584	741	988	990	90	72	6E
Meeting Rooms 615-620 Combined	9,184	853	112	82	14	-	-	-	500	44	38	6F
Ballrooms 6AB Combined	20,068	1,982	173	116	21	2,296	1,023	1,364	1,370	99	81	6AB
Ballrooms 6BC Combined	21,334	2,737	184	116	21	2,494	1,026	1,368	1,410	122	104	6BC
Ballrooms 6ABC Combined	29,464	3,668	255	116	21	3,111	1,551	2,068	2,080	154	136	6ABC
Ballrooms 6ABC & 605-610 Comb.	39,484	-	-	-	21/16	4,176	-	-	2,610	219	188	6ABCD
East Meeting Room Lobby	7,000	-	-	-	16	-	-	-	-	-	-	EAST
West Meeting Room Lobby	2,500	-	-	-	16	-	-	-	-	-	-	WEST

(Continued On Next Page)

Level 6 - Ballrooms & Meeting Rooms

LOCATION Description	DIMENSIONS				CAPACITIES					
	Square Feet	Length	Width	Height (Feet)	Theater	Schoolroom 3pp	Schoolroom 4pp	Banquet B-10	Conference Style	Room ID
MEETING ROOMS-Level 6										
Meeting Room 601	762	34	23	16	60	30	40	40	28	601
Meeting Room 602	1,188	44	27	16	108	42	56	60	40	602
Meeting Room 603	1,144	44	26	16	99	42	56	60	40	603
Meeting Room 604	1,219	53	23	16	120	54	72	80	46	604
Meeting Rooms 602-603 Combined	2,332	53	44	16	<u>220</u>	108	144	140	-	602-603
Meeting Rooms 602-604 Combined	3,604	68	53	16	<u>336</u>	<u>144</u>	<u>192</u>	240	-	602-604
Meeting Room 605	1,110	37	30	16	91	42	60	60	36	605
Meeting Room 606	1,840	46	40	16	167	81	108	110	48	606
Meeting Room 607	1,840	46	40	16	171	84	112	110	56	607
Meeting Room 608	2,000	50	40	16	190	96	128	120	56	608
Meeting Room 609	2,000	50	40	16	186	90	120	120	56	609
Meeting Room 610	1,230	41	30	16	112	54	72	60	40	610
Meeting Rooms 605 & 610 Comb.	2,370	79	30	16	209	117	156	120	-	605/610
Meeting Rooms 605-606 Combined	2,950	70	37	16	<u>270</u>	132	176	200	-	605-606
Meeting Rooms 605-607 Combined	4,790	110	46	16	<u>517</u>	228	304	330	-	605-607
Meeting Rooms 606-607 Combined	3,680	80	46	16	<u>373</u>	<u>165</u>	<u>220</u>	250	-	606-607
Meeting Rooms 606-609 Combined	7,680	96	80	16	<u>816</u>	414	552	420	-	606-609
Meeting Rooms 608-609 Combined	4,000	80	50	16	<u>391</u>	<u>156</u>	<u>224</u>	270	-	608-609
Meeting Rooms 608-610 Combined	5,230	110	50	16	<u>534</u>	266	359	330	-	608-610
Meeting Rooms 609-610 Combined	3,230	70	41	16	<u>296</u>	156	208	210	-	609-610
Meeting Room 611	1,537	53	29	16	<u>132</u>	54	72	80	48	611
Meeting Room 612	1,696	53	32	16	<u>156</u>	81	108	110	48	612
Meeting Room 613	1,080	36	30	16	84	30	40	60	32	613
Meeting Room 614	936	36	26	16	84	30	40	60	32	614
Meeting Rooms 611-612 Combined	3,233	61	53	16	<u>364</u>	<u>165</u>	<u>200</u>	180	-	611-612
Meeting Rooms 611-614 Combined	5,194	98	53	16	<u>550</u>	<u>255</u>	<u>340</u>	280	-	611-614
Meeting Rooms 612-614 Combined	3,657	69	53	16	<u>350</u>	<u>180</u>	<u>240</u>	200	-	612-614
Meeting Rooms 613-614 Combined	2,052	57	36	16	<u>184</u>	87	116	120	-	613-614
Meeting Room 615	1,014	39	26	14	96	42	60	60	40	615
Meeting Room 616	1,053	39	27	14	96	42	60	60	40	616
Meeting Room 617	1,053	39	27	14	96	42	60	60	40	617
Meeting Room 618	1,080	40	27	14	96	42	60	60	40	618
Meeting Room 619	1,080	40	27	14	96	42	60	60	40	619
Meeting Room 620	1,040	40	26	14	86	40	60	60	32	620
Meeting Rooms 615-616 Combined	2,106	54	39	14	220	108	144	130	-	615-616
Meeting Rooms 615-617 Combined	3,159	82	39	14	360	168	224	180	-	615-617
Meeting Rooms 616-617 Combined	2,106	55	39	14	220	108	144	130	-	616-617
Meeting Rooms 618-619 Combined	2,200	55	40	14	220	108	144	130	-	618-619
Meeting Rooms 618-620 Combined	3,240	81	40	14	360	168	224	180	-	618-620
Meeting Rooms 619-620 Combined	2,160	54	40	14	241	108	144	120	-	619-620



Washington State Convention & Trade Center

800 Convention Place • Seattle, Washington, 98101-2350

(206) 694-5030 • Fax (206) 694-5399

www.wsctc.com

email: sales@wsctc.com