

GEOLOGIC CROSS-SECTION AND COLUMN

PURPOSE:

Using RELATIVE DATING TECHNIQUES, each student will construct a GEOLOGIC CROSS-SECTION and a corresponding GEOLOGIC COLUMN.

MATERIALS:

- ✓ 1 sheet of 8 ½ x 11 white paper
- ✓ several strips of different colored construction paper
- ✓ 1 pencil
- ✓ 1 glue stick
- ✓ 1 pair of scissors
- ✓ 1 colored marker/colored pencil/crayon

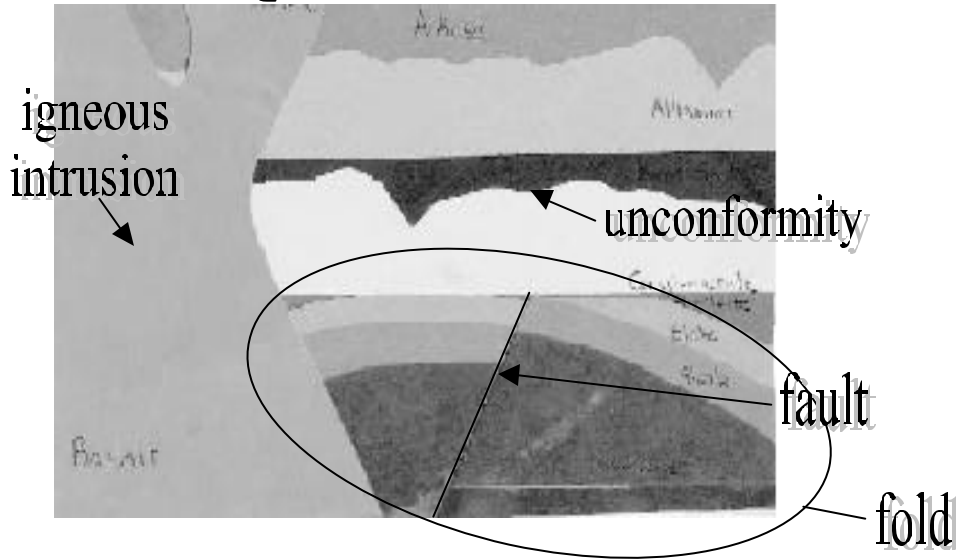
PROCEDURE:

1. Use the pencil to draw an outline of a geologic cross-section on the 8 ½ X 11 piece of white paper. The cross-section must include a minimum of the following:
 - a. 6 different rock layers
 - b. 1 unconformity
 - c. 1 igneous intrusion
 - d. Folded layers (10 POINTS)
 - e. Faulted layers (10 POINTS)
2. Use the scissors, construction paper, and glue to complete the geologic cross-section. Cut the construction paper into the shapes drawn and then paste them in the proper order to the white paper.
3. Use the marker/colored pencil/crayon to label each of the layers with an appropriate rock name. Do not number the layers on the front.
4. On the back, write the CORRECT geologic column, starting with 1 at the bottom and working your way up.

BONUS

5.

Geologic Cross-Section



Geologic Column

14. basalt
13. arkose
12. unconformity
11. alluvium
10. black shale
9. unconformity
8. conglomerate
7. unconformity
6. fault
5. fold
4. quartzite
3. slate
2. shale
1. limestone